

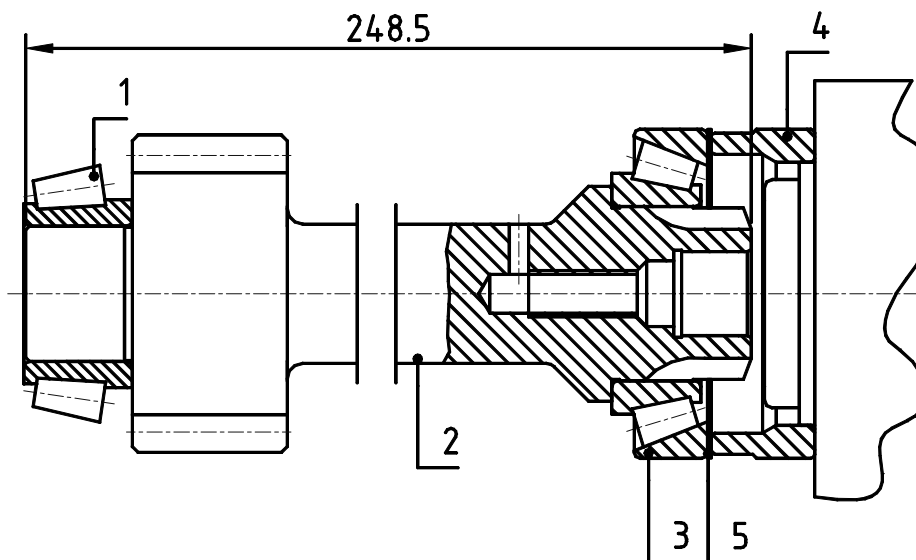


# ADAPTER KIT TO POWER TAKE OFFS ZF

9-S-75/13.16 ; 9-S-75/9.56

Ref. VK4018S  
VK4018AM

## Main Dimensions



- 1 – Bearing
- 2 – Adapter Shaft VK4018
- 3 – Bearing
- 4 – Washer
- 5 – Adjustment Washer

## Main Data

<b>Continuous Torque (Nm)</b>	<b>300</b>
<b>Intermittent Torque (Nm)</b>	<b>420</b>
<b>Power (at 1000 r.p.m)</b>	<b>42 H.P. / 32 Kw</b>
<b>Weight (Kg)</b>	<b>4,3</b>
<b>Engine to PTO ratio</b>	
9-S-75 / 13.16	- 1 : 0.610
9-S-75 / 9.56	- 1 : 0.850

### Note 1:

For getting the correct ratio is necessary to multiply the above mentioned ratio by the internal ratio in all S6-90 releases.

### Example:

Gearbox 9-S-75 / 13.16 Adapter Kit + ZF S6-90 (Ref. TF4002AMP) Internal Ratio 1:1.32

Final ratio: - 1 : 0.805 (0.610 x 1.32 = 0.805)

### Note 2:

Adapter Kit is supplied without studs. Please use those that are provided with the PTO.

CTI VK4018S / VK4018AM 0811-1

ABER is constantly engaged in improving its products and, therefore, reserves itself the right to modify without any further notice the characteristics shown. The gear boxes are in constant change; therefore, ABER is not to be held responsible for any damage resulting from wrong application or application of outdated material.



**ABER - Embraiaçgens e Comandos Hidráulicos - A. B. LDA**

Rua Francisco de Almeida, Nº 30 – Vila Nova da Telha – 4470 MAIA - Portugal

Telephone: +351.22.9438070 Fax: +351.22.9420823 e-mail: [aber@aber.pt](mailto:aber@aber.pt) <http://www.aber.pt>