

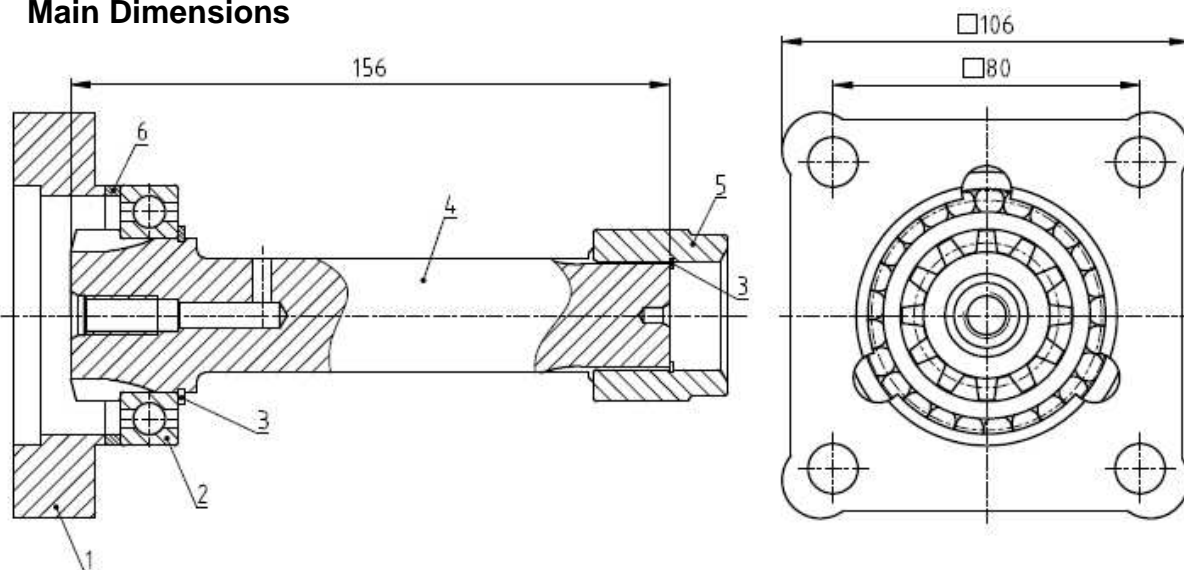


ADAPTER KIT TO POWER TAKE OFFS EATON

Ref. VK7002S

FS 5109 ; FSO 5109 ; FS 6109 ; FSO 6109 ;
FS 8209 ; FSO 8209 ; FS 8309 ; FSO 8309

Main Dimensions



- 1 – Flange
- 2 – Bearing
- 3 – Circlip
- 4 – Adapter shaft VK7002
- 5 – Adapter sleeve
- 6 – Adapter washer

(Dimensions in mm)

Main Data

Continuous Torque (Nm)	300
Intermittent Torque (Nm)	420
Power (at 1000 r.p.m)	42 C.V. / 32 Kw
Weight (Kg)	2.5
Engine-Kit adapter ratio	

5109 DT	- 1 : 0.709	FS 8209 A	- 1 : 0.818
5109 OD	- 1 : 0.937	FSO 8209 A	- 1 : 0.818
6109 DT	- 1 : 0.765	FS 8309 A	- 1 : 0.818
6109 OD	- 1 : 1.024	FSO 8309 A	- 1 : 0.818

KIT Studs :

KIT VK7002S for PTO (ratio 1:1)

- 4 stud M12x135
- 4 nut M12
- 4 washer
- 2 jute ZF

CTI VK7002S 0812-1

ABER is constantly engaged in improving its products and, therefore, reserves itself the right to modify without any further notice the characteristics shown. The gear boxes are in constant change; therefore, ABER is not to be held responsible for any damage resulting from wrong application or application of outdated material.



ABER - Embraiagens e Comandos Hidráulicos - A. B. LDA

Rua Francisco de Almeida, Nº 30 – Vila Nova da Telha – 4470 MAIA - Portugal

Telephone: +351.22.9438070 Fax: +351.22.9420823 e-mail: aber@aber.pt <http://www.aber.pt>

1/1

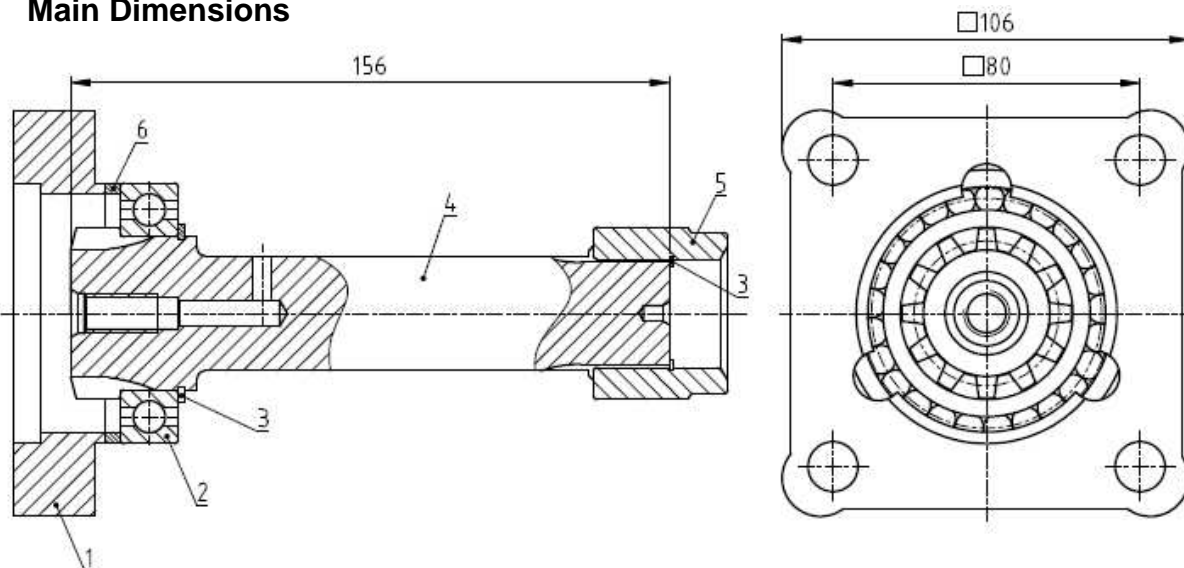


ADAPTER KIT TO POWER TAKE OFFS EATON

Ref. VK7002AM

FS 5109 ; FSO 5109 ; FS 6109 ; FSO 6109 ;
FS 8209 ; FSO 8209 ; FS 8309 ; FSO 8309

Main Dimensions



- 1 – Flange
- 2 – Bearing
- 3 – Circlip
- 4 – Adapter shaft VK7002
- 5 – Adapter sleeve
- 6 – Adapter washer

(Dimensions in mm)

Main Data

Continuous Torque (Nm)	300
Intermittent Torque (Nm)	420
Power (at 1000 r.p.m)	42 C.V. / 32 Kw
Weight (Kg)	2.5
Engine-Kit adapter ratio	

5109 DT	- 1 : 0.709	FS 8209 A	- 1 : 0.818
5109 OD	- 1 : 0.937	FSO 8209 A	- 1 : 0.818
6109 DT	- 1 : 0.765	FS 8309 A	- 1 : 0.818
6109 OD	- 1 : 1.024	FSO 8309 A	- 1 : 0.818

Note :

For getting the correct ratio is necessary to multiply the above mentioned ratio by the internal ratio in all S6-90 releases.

Example:

Gearbox 5109 DT Adapter Kit + ZF S6-90 (Ref. TF4002AMP) Internal Ratio 1:1.32

Final ratio: - 1 : 0.936 (0.709 x 1.32 = 0.936)

KIT Studs:

KIT VK7002AM for PTO (ratio 1:1.32)

- 2 stud M12x113
- 2 stud M12x150
- 4 nut M12
- 4 washer
- 2 jute ZF

ABER is constantly engaged in improving its products and, therefore, reserves itself the right to modify without any further notice the characteristics shown. The gear boxes are in constant change; therefore, ABER is not to be held responsible for any damage resulting from wrong application or application of outdated material.



ABER - Embraiaçes e Comandos Hidráulicos - A. B. LDA

Rua Francisco de Almeida, Nº 30 – Vila Nova da Telha – 4470 MAIA - Portugal

Telephone: +351.22.9438070 Fax: +351.22.9420823 e-mail: aber@aber.pt <http://www.aber.pt>